

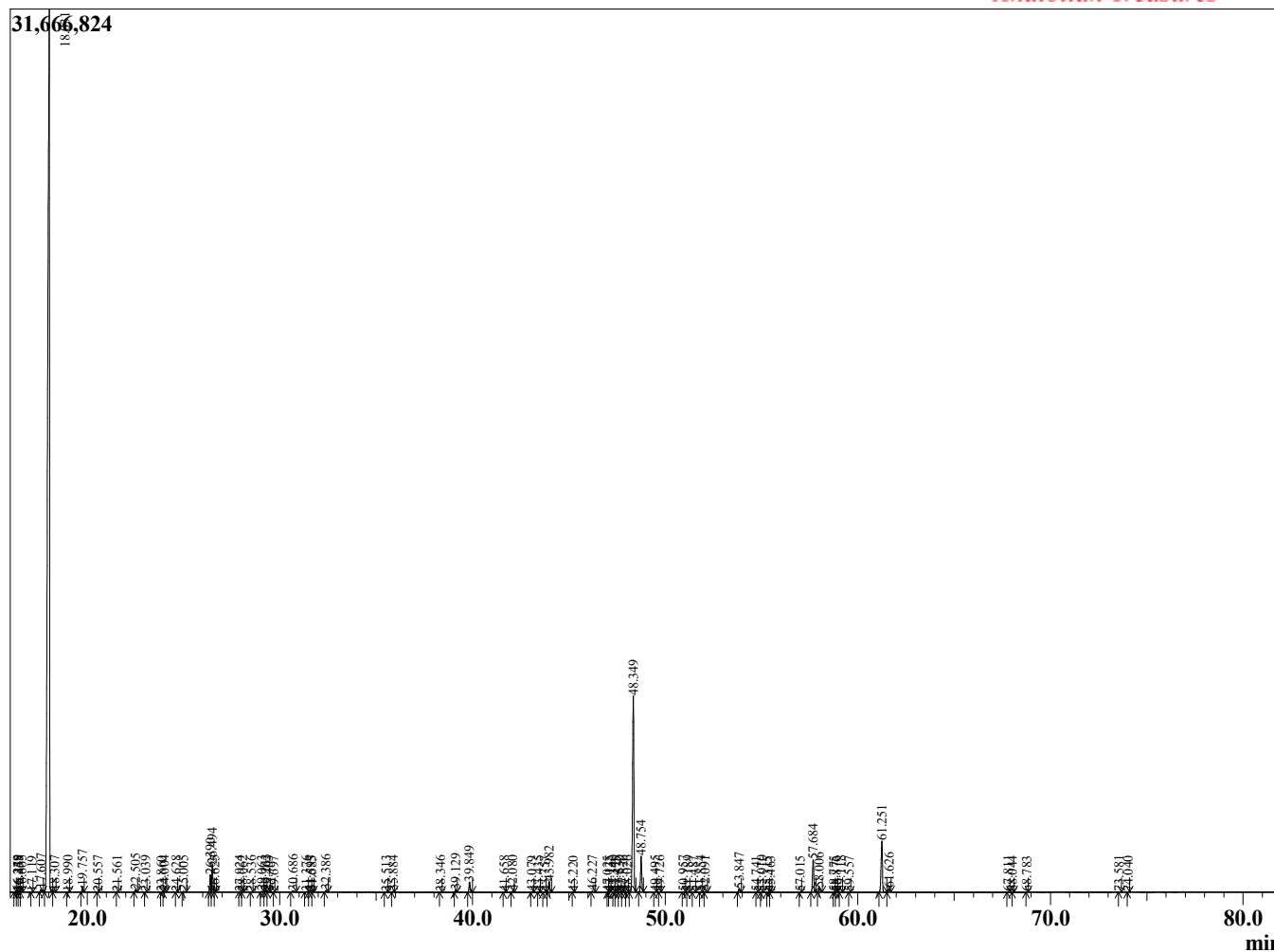
Sample Information

Sample Type : Essential Oil
 Sample Name : Apium graveolens
 Injection : 0.10
 Volume :

Celery Seed
 Lot# IDH16-HK
 Country: India



Chromatogram Apium graveolens



R.Time	Name	Area%
4.044	3-Methylbutanal	0.01
4.154	2-Methylbutanal	0.01
4.370	3-Penten-2-ol	0.01
9.013	2-Methyl octene	0.01
10.557	Nonane	0.01
11.894	alpha-Thujene	0.01
12.298	alpha-Pinene	0.21
14.464	Sabinene	0.08
14.764	beta-Pinene	0.62
15.398	Myrcene	1.20
16.249	Octanal	0.02
16.378	Unidentified	0.02
16.455	alpha-Phellandrene	0.01
16.605	delta-3-Carene	0.03
17.119	alpha-Terpinene	0.01
17.607	para-Cymene	0.15
18.031	Limonene	73.09
18.307	cis-beta-Ocimene	0.03
18.990	trans-beta-Ocimene	0.02
19.757	gamma-Terpinene	0.25
20.557	1-Octanol	0.01
21.561	Terpinolene	0.01
22.505	Linalool	0.10
23.039	1-Octen-3-yl acetate	0.01
23.860	3-Octyl acetate	0.01
24.004	trans-p-Mentha-2,8-dienol	0.04
24.628	Limona ketone	0.01
25.005	cis-para-Mentha-2,8-dien-1-ol	0.05
26.390	Pentyl benzene	0.87
26.494	(3E,5Z)-Undeca-1,3,5-triene	1.33
26.625	Unidentified	0.01
27.924	Unidentified	0.02
28.062	Terpinen-4-ol	0.01
28.536	trans-Isocarveol	0.02
29.063	alpha-Terpineol	0.05
29.263	cis-Dihydrocarvone	0.07
29.403	trans-Isopiperitenol	0.04
29.697	trans-Dihydrocarvone	0.01
30.686	trans-Carveol	0.10
31.376	Unidentified	0.04
31.593	cis-Carveol	0.05
31.685	Unidentified	0.01
32.386	Carvone	0.08
35.513	Thymol	0.04
35.884	trans-Pinocarvyl acetate	0.05
38.346	trans-Carveyl acetate	0.02
39.129	8-para-Menthen-1,2-diol	0.11
39.849	Valerophenone	0.51
41.658	Unidentified	0.02
42.080	beta-Elemene	0.05
43.079	Unidentified	0.02
43.435	Unidentified	0.01
43.757	alpha-Cedrene	0.01
43.982	beta-Caryophyllene	0.57
45.220	Unidentified	0.01
46.227	alpha-Humulene	0.06

R.Time	Name	Area%
47.025	Unidentified	0.01
47.135	Drima-7,9(11)-diene	0.01
47.340	Selina-4,11-diene	0.02
47.475	Unidentified	0.01
47.630	gamma-Curcumene	0.02
47.826	Ar-Curcumene	0.06
48.026	Unidentified	0.02
48.349	beta-Selinene	11.76
48.754	alpha-Selinene	1.95
49.495	Unidentified	0.03
49.726	Unidentified	0.02
50.957	Unidentified	0.02
51.189	Selina-4(15),7(11)-diene	0.03
51.487	Selina-3,7(11)-diene	0.02
51.854	alpha-Elemol	0.02
52.091	Unidentified	0.03
53.847	Caryophyllene oxide	0.20
54.741	Unidentified	0.01
55.010	Unidentified	0.02
55.315	Unidentified	0.01
55.463	Humulene epoxide II	0.02
57.015	Unidentified	0.01
57.684	3-Butyl phthalide	1.78
58.006	beta-Eudesmol	0.26
58.775	(3Z)-Butylidene phthalide	0.01
58.876	Unidentified	0.01
59.118	Unidentified	0.02
59.557	Unidentified	0.01
61.251	Sedanenolide	3.05
61.626	3-Isobutylidenphthalide	0.20
67.811	Neophytadiene	0.02
68.044	Unidentified	0.01
68.783	Unidentified	0.01
73.581	Unidentified	0.01
74.040	Unidentified	0.01
96.412	Unidentified	0.06
		100.00